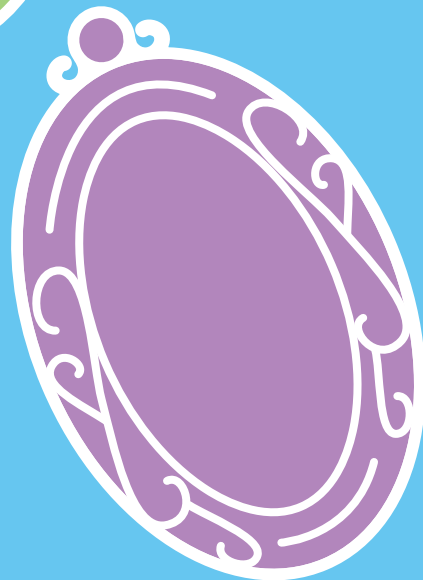
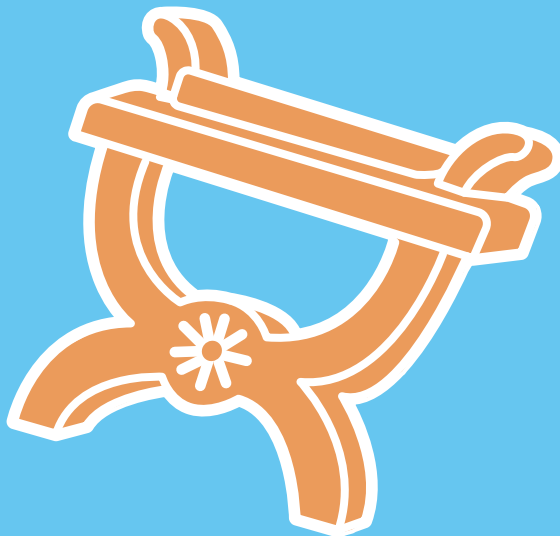
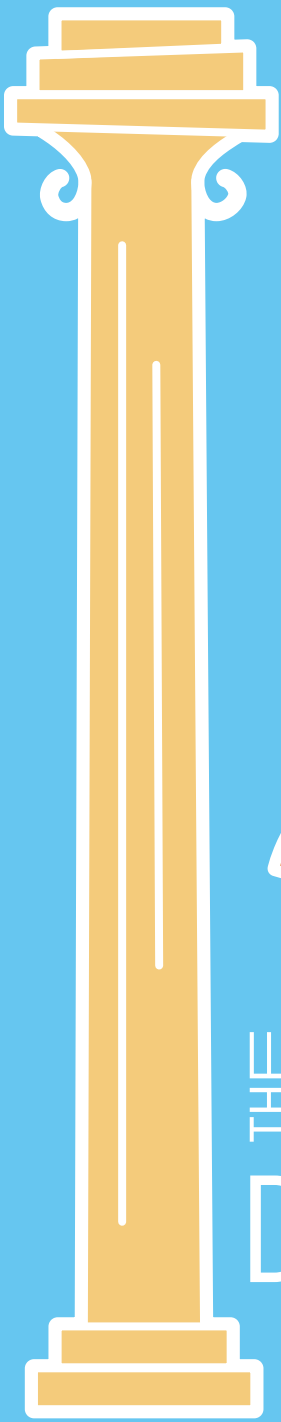


Kids' Guide

MUSEUM
OF THE
CITY
OF NEW YORK



THE STETTHEIMER DOLLHOUSE UP CLOSE

WELCOME TO THE STETTHEIMER DOLLHOUSE: UP CLOSE!

USE THIS GUIDE TO LEARN AND
THINK ABOUT AN ENCHANTING
12-ROOM DOLLHOUSE AND THE
ARTIST BEHIND IT.



ABOUT THE ARTIST



**THIS IS A PAINTING OF
CARRIE STETTHEIMER**

See back page for image credit.

She is the artist who
created the dollhouse
you are about to see.
Her sister Florine
painted this portrait!

LOOK CLOSER

What is Carrie standing next to?
What is she holding in her hand?

How would you describe the **STYLE** of Carrie's outfit?

TRY IT OUT

Can you pose like Carrie in this painting?



FIND

Can you find . . .

9 roses on the ground where Carrie is standing?

7 windows on the dollhouse?

3 people sitting in chairs?

1 person riding a bicycle?

The Year
1923?
This is the year that Florine created this painting.

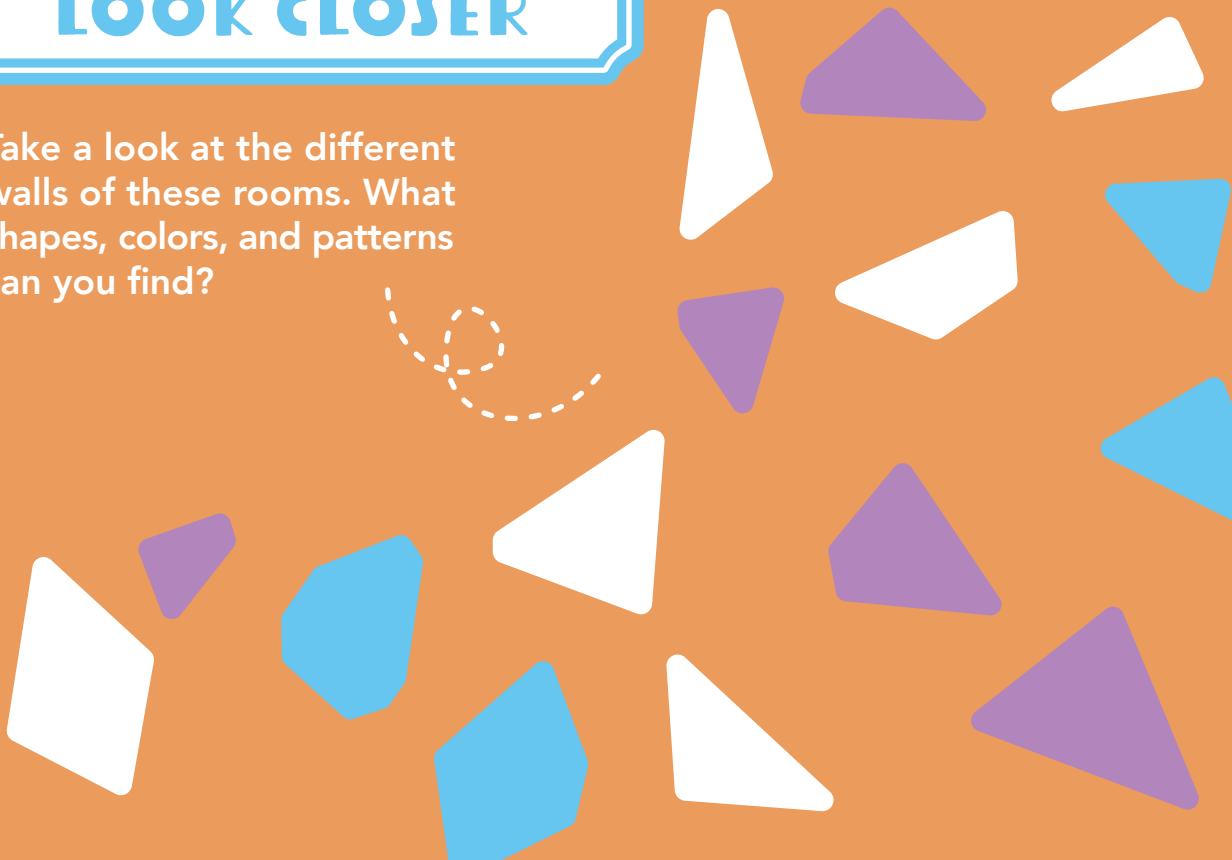
THE DOLLHOUSE

Walk into the gallery and take a close look at the dollhouse in the middle of the room.

Help keep the dollhouse safe by not touching the glass case!

LOOK CLOSER

Take a look at the different walls of these rooms. What shapes, colors, and patterns can you find?



FIND

Can you find . . .

1 bed with red,
yellow, and green
flowers on it?



2 beds with
gold, swirling
designs?

2 beds covered
by a pink, blue,
and gray canopy?

A canopy is a cloth
hanging over a bed.



THE NURSERY



LOOK CLOSER

What colors and patterns do you see on the walls of this room?

What does this room make you feel or think about?

Imagine that you were small enough to fit in this room.

What would you use this room for?

What materials do you think were used to make the furniture and objects in this room?



See back page for image credit.

MINI ARTWORKS



Walk around the dollhouse and find a gold statue and white statue.

Lean in and look through the doors of the room behind them.

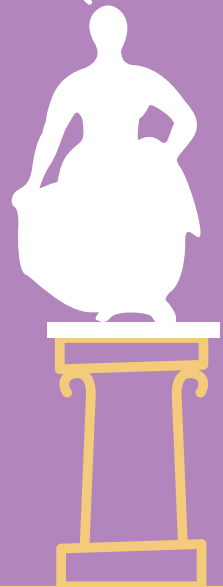
What do you see on the wall?

LOOK CLOSER

These tiny works of art are by many different artists. Carrie Stettheimer invited these artists to create miniature (or very small) copies of their own art for this dollhouse.

FIND

Choose one of these miniature artworks inside the dollhouse. Now turn around in the room where you are standing: can you find the larger version of this artwork on the wall behind you?



GET CREATIVE



Get inspired by the portrait of Carrie that her sister painted,
and draw a portrait of somebody you love!

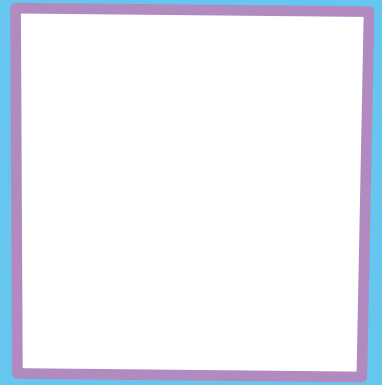
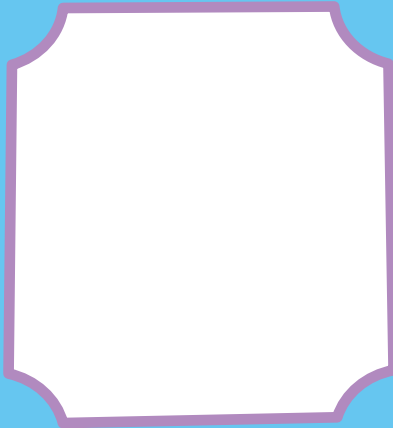
What will they
be wearing in
your portrait?

What will they
be doing?



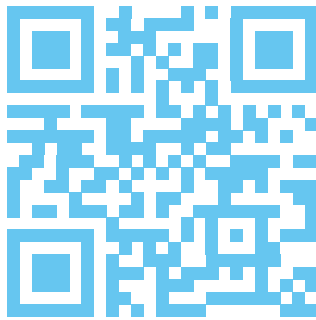
Design your own unique wallpaper!

↳ Look at the walls of the different bedrooms for ideas.



Create your own miniature artwork
that you would hang in a dollhouse!

**WANT TO LEARN MORE
ABOUT THIS DOLLHOUSE AND
BUILD AND DESIGN YOUR OWN
MINIATURE DOLLHOUSE AT HOME?**



Check out this video from the Museum of
the City of New York and Project Kid!

Image Credit:

Florine Stettheimer (1871-1944), *Portrait of My Sister, Carrie W. Stettheimer, 1923*, oil on canvas laid on hardboard backing, 37 7/8 x 26 in. (96.2 x 66.2 cm), Art Properties, Avery Architectural & Fine Arts Library, Columbia University, Gift of the Estate of Ettie Stettheimer (1967.17.007).

Carrie Stettheimer (b. 1869, d. 1944)
Stettheimer Dollhouse

Museum of the City of New York. Gift of Miss Ettie Stettheimer, 1945, 45.125.1.

Photograph copyright the Museum of the City of New York, by Ali Elai of Camerarts, Inc.

Family Guides are made possible in part by the Margaret S. Ogden and Stephen A. Ogden Memorial Fund, Milton and Sally Avery Arts Foundation, and Tianaderrah Foundation. Additional support provided by Council Members Diana Ayala - District 8, Bill Perkins - District 9, and Keith Powers - District 4.